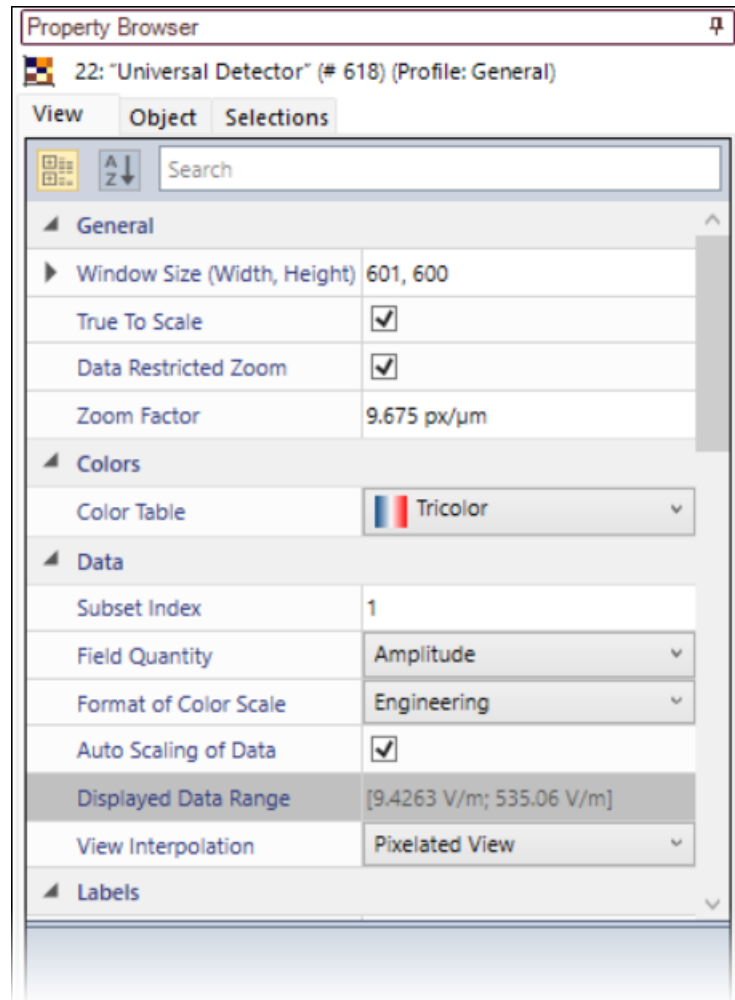


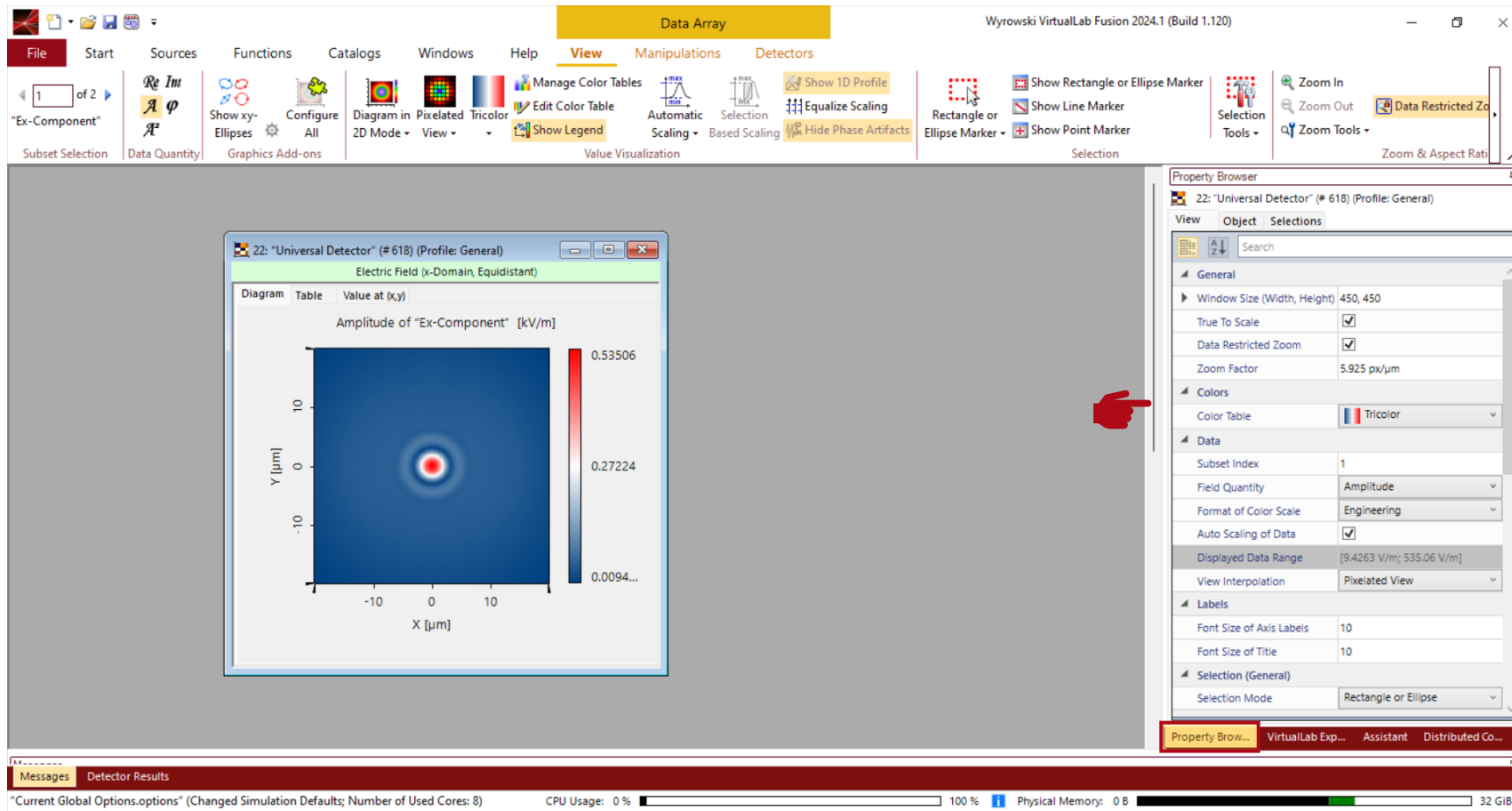
Working with the Property Browser

Abstract



When investigating any kind of result, a quick and easy access to all necessary information is key. For this purpose, VirtualLab Fusion uses the Property Browser to relay a complete summary of physical and numerical information about any selected object directly to the user.

Where to find the Property Browser?

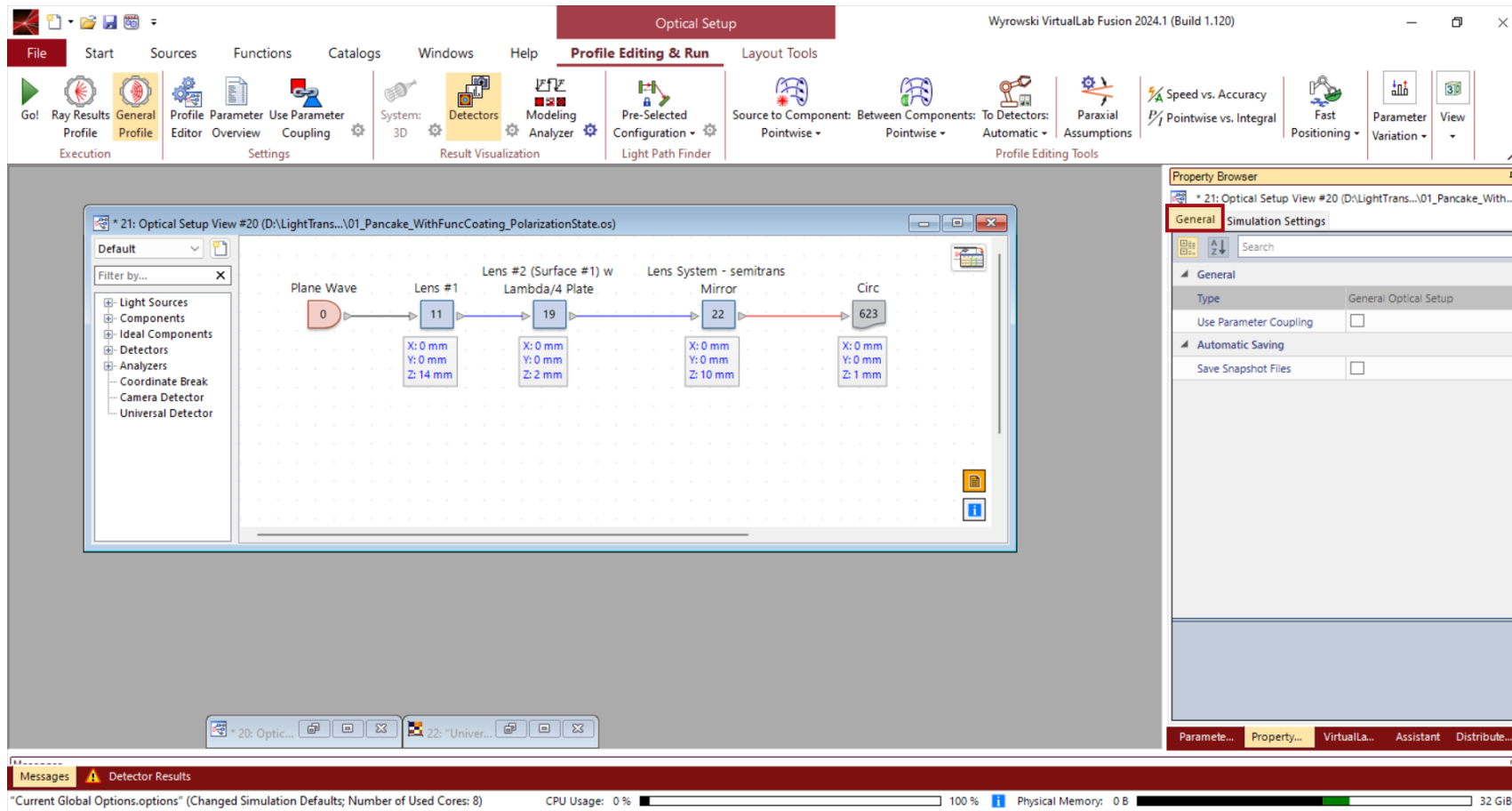


The *Property Browser* can be found at the right side of the main window. It shares the same panel with the *VirtualLab Explorer*, the *Assistant* and *Distributed Computing*.

The displayed options and properties are dependent on the type of active* document (e.g., data array, optical setup etc.).

*The active document is the last document the user have clicked on.

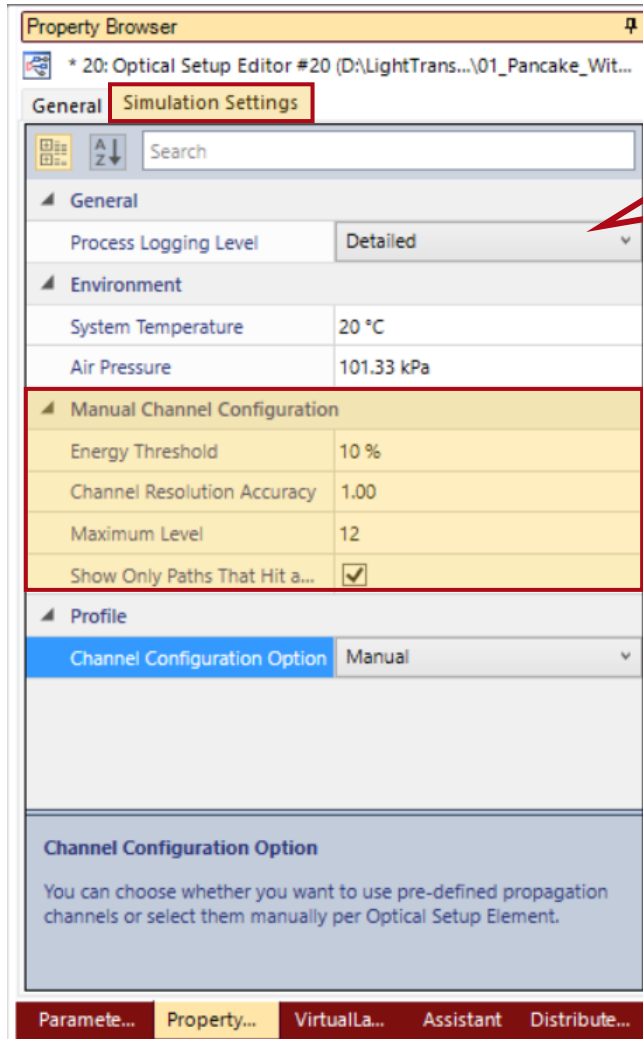
Property Browser for Optical Setups – General Tab



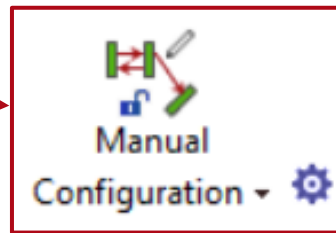
When an *Optical Setup* is the active document, the *Property Browser* contains two subsections, *General* and *Simulation Settings*.

In the *General* section, users can activate or de-activate the *Parameter Coupling* as well as the automatic save function.

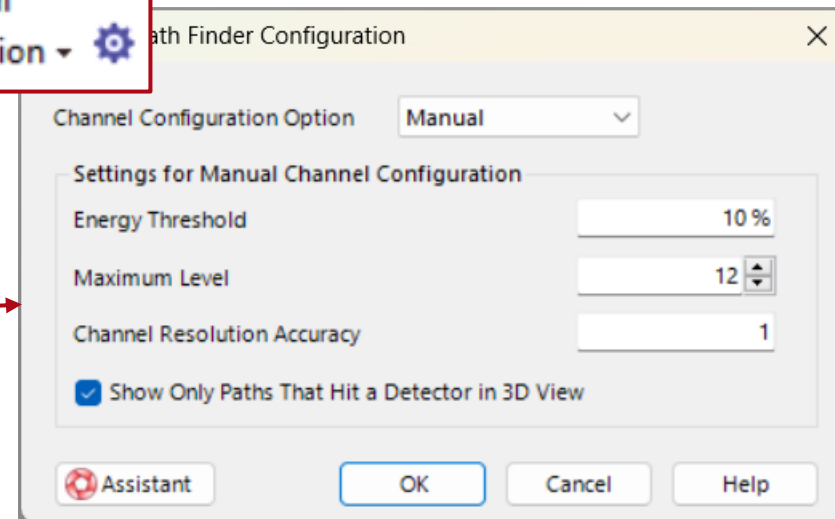
Property Browser for Optical Setups – Simulation Settings



For more information on *Logging Levels*, please see: [Logging in VirtualLab Fusion](#)

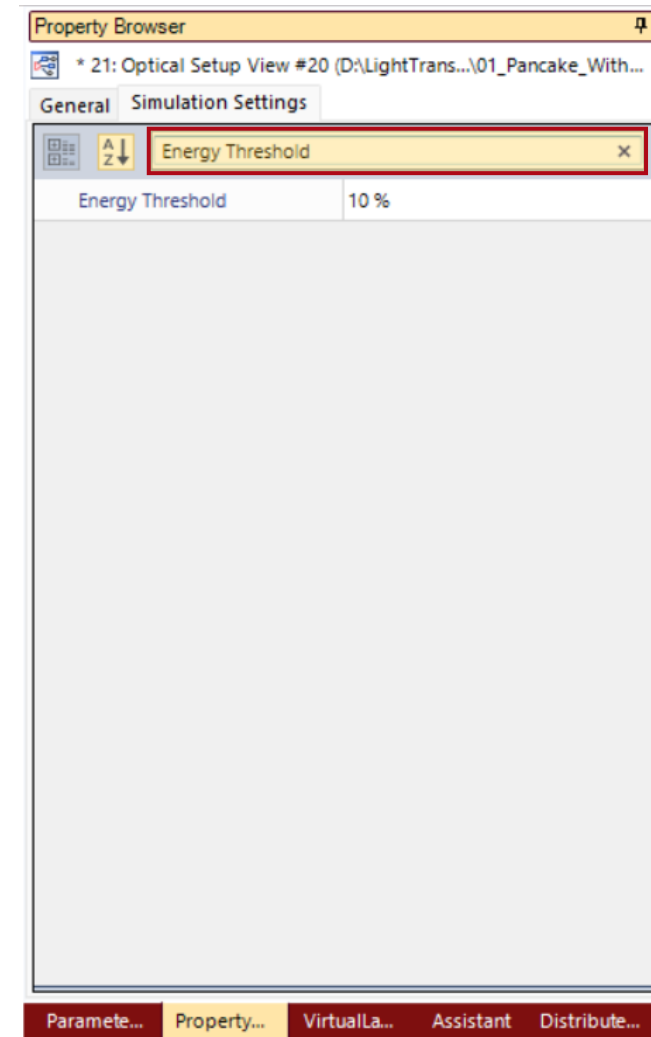
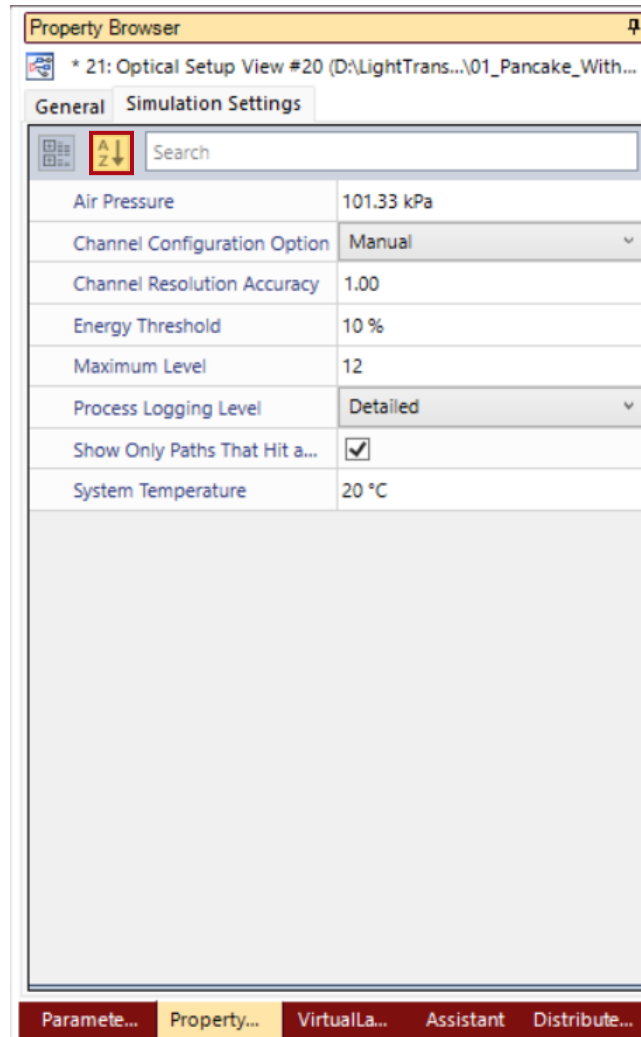


The *Simulation Settings* allow for control over the logging, environmental parameters and settings for non-sequential simulations. Though the latter will only appear if the parameter *Channel Configuration Option* is set to *Manual*.

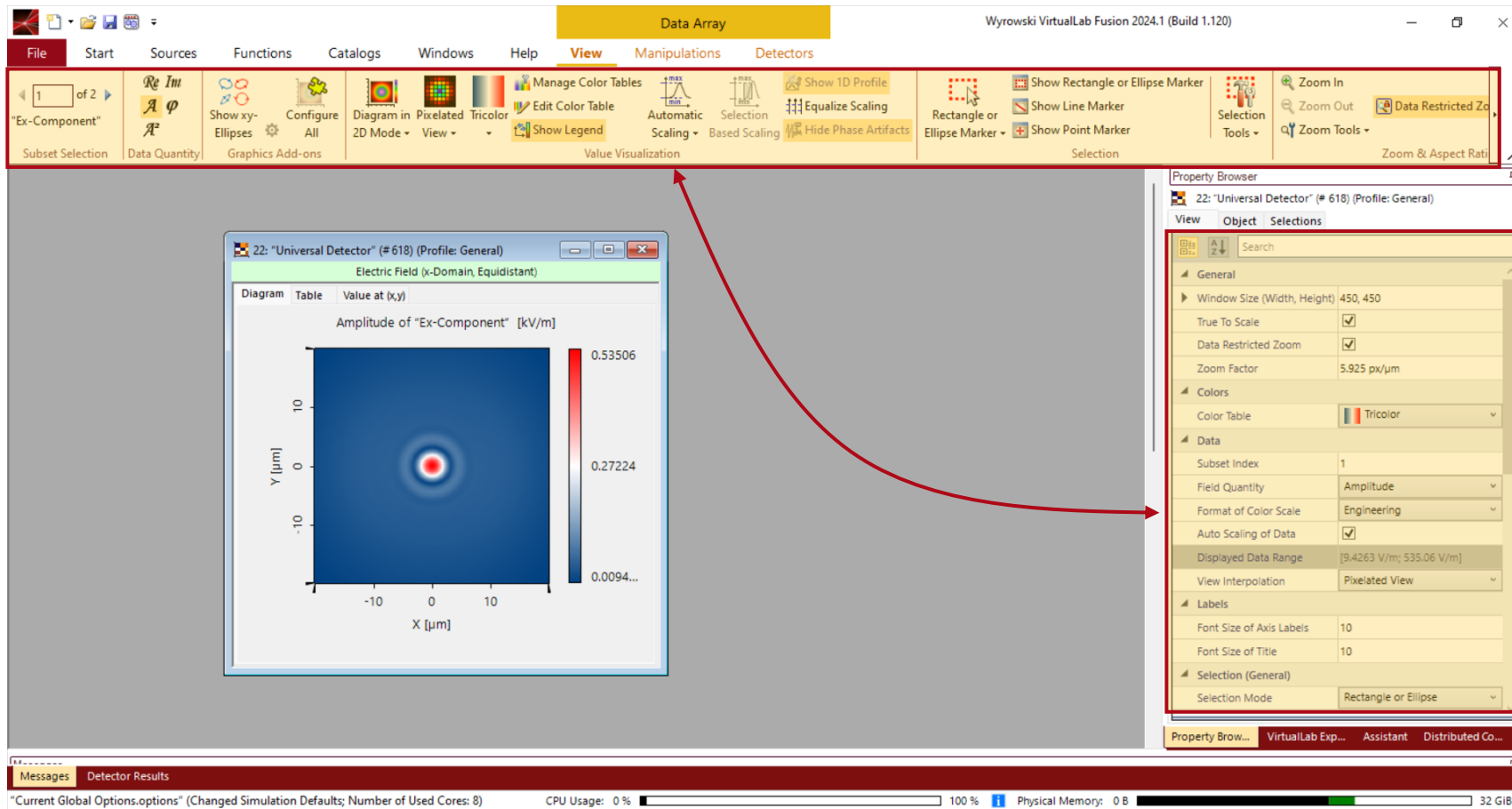


Alphabetical Order & Search Function

For better navigation, VirtualLab Fusion offers an alphabetically order function and a search function.



Property Browser for Data Arrays



When an *Optical Setup* is the active document, the *Property Browser* contains two subsections, *General* and *Simulation Settings*.

In the *General* section, users can activate or de-activate the *Parameter Coupling* as well as the automatic save function.

Window Size

Property Browser

22: "Universal Detector" (# 618) (Profile: General)

View Object Selections

Search

General

Window Size (Width, Height) 600, 600

True To Scale

Data Restricted Zoom

Zoom Factor 9.675 px/ μm

Colors

Color Table Tricolor

Data

Subset Index 1

Field Quantity Amplitude

Format of Color Scale Engineering

Auto Scaling of Data

Displayed Data Range [9.4263 V/m; 535.06 V/m]

View Interpolation Pixelated View

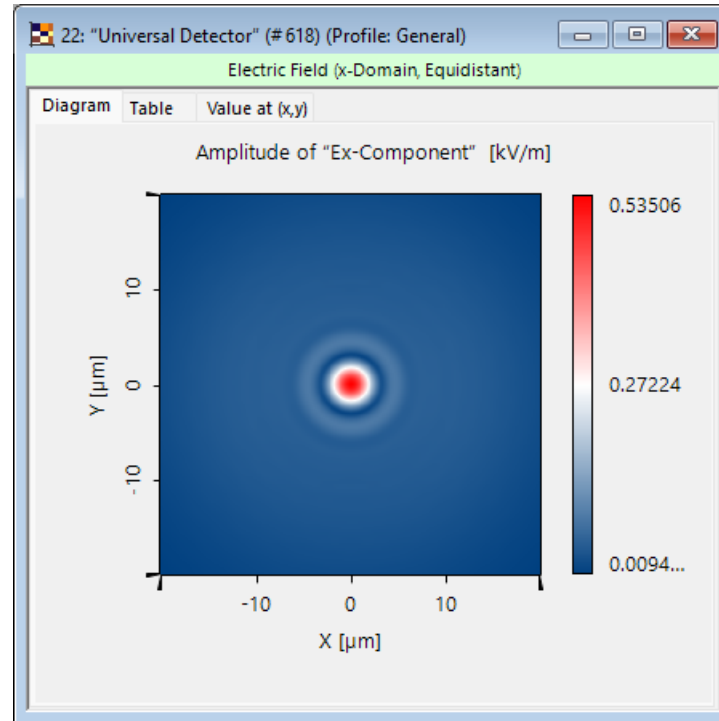
Labels

Font Size of Axis Labels 10

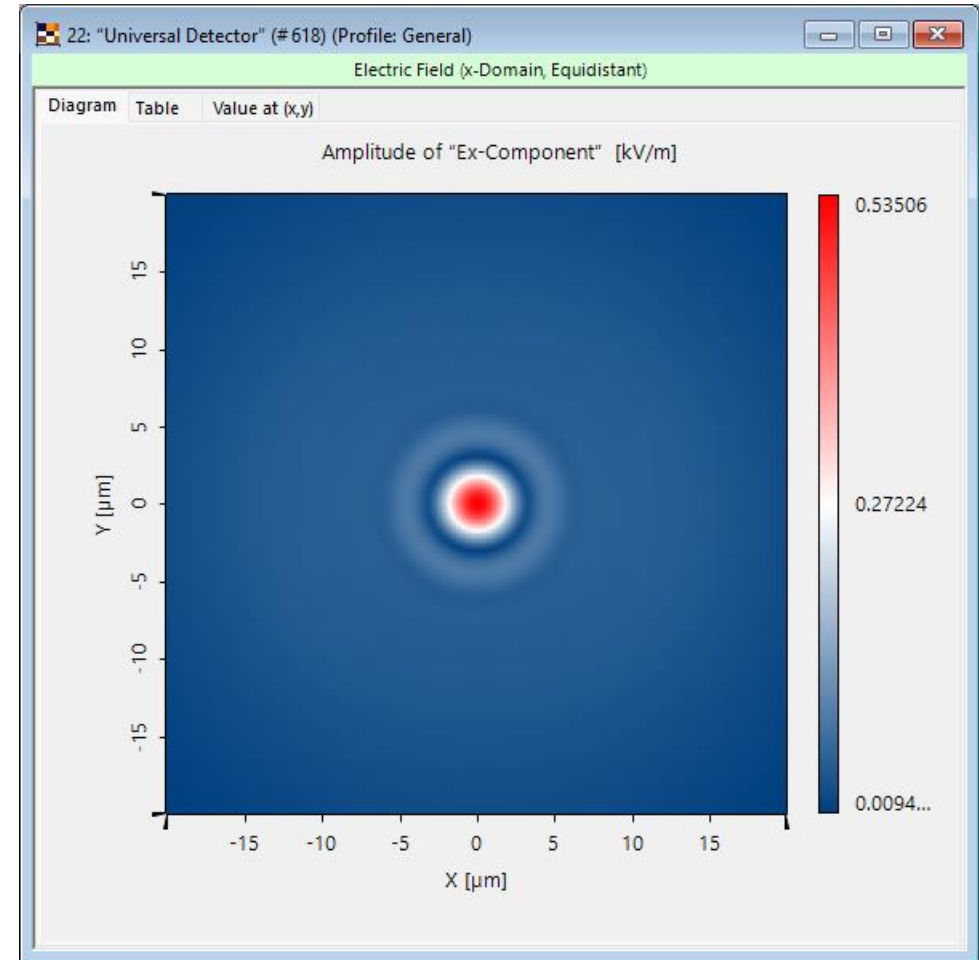
Font Size of Title 10

Selection (General)

Selection Mode Rectangle or Ellipse



(400,400)



(600,600)

Label Size

Property Browser

22: "Universal Detector" (# 618) (Profile: General)

View Object Selections

Search

General

Window Size (Width, Height) 600, 600

True To Scale

Data Restricted Zoom

Zoom Factor 9.675 px/ μm

Colors

Color Table Tricolor

Data

Subset Index 1

Field Quantity Amplitude

Format of Color Scale Engineering

Auto Scaling of Data

Displayed Data Range [9.4263 V/m; 535.06 V/m]

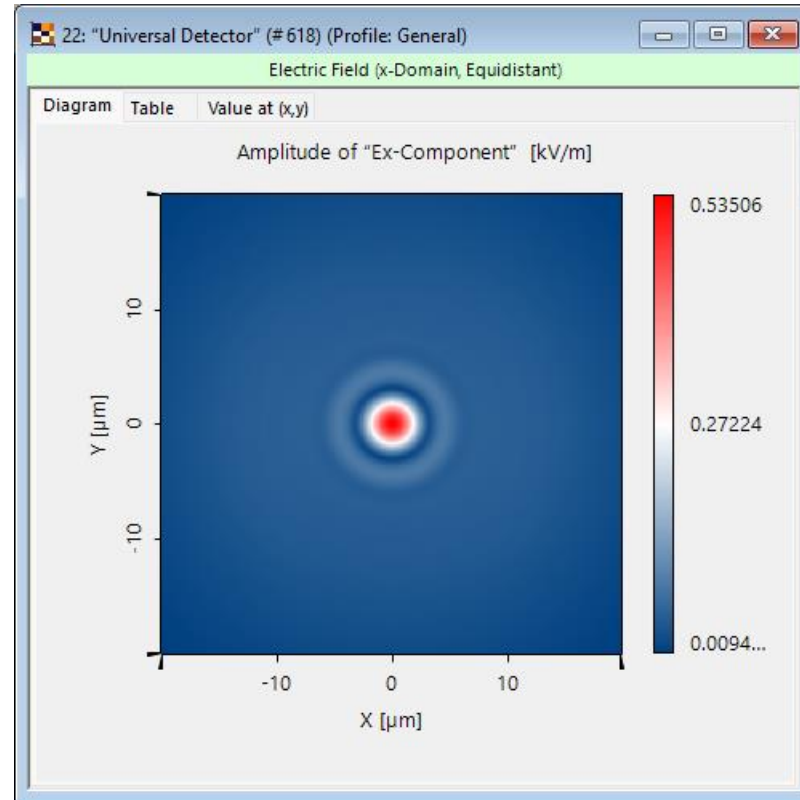
View Interpolation Pixelated View

Labels

Font Size of Axis Labels	10
Font Size of Title	10

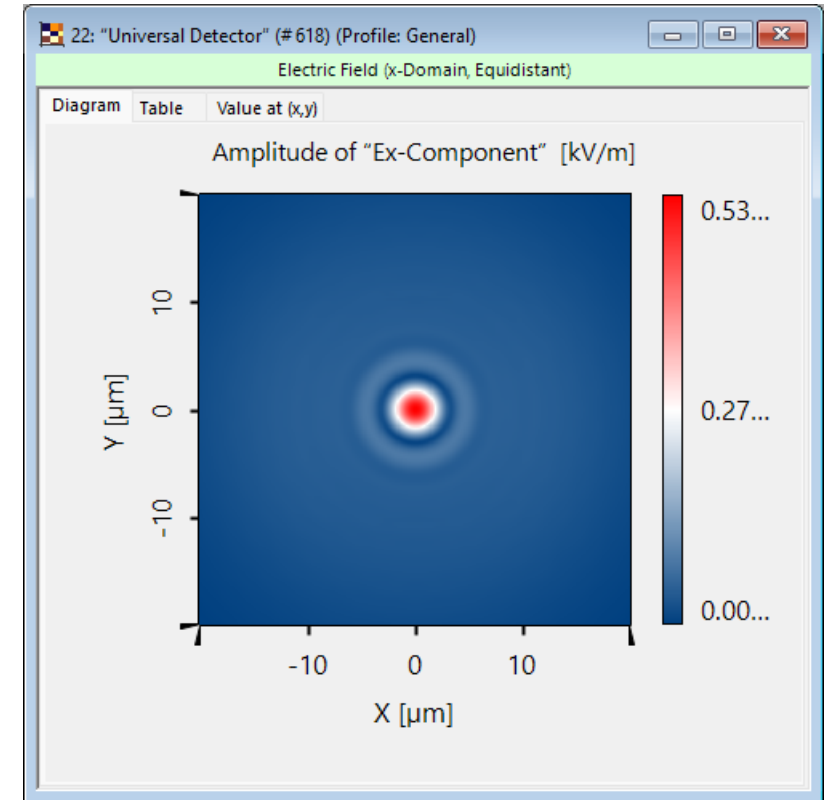
Selection (General)

Selection Mode Rectangle or Ellipse



Labels

Font Size of Axis Labels	10
Font Size of Title	10



Labels

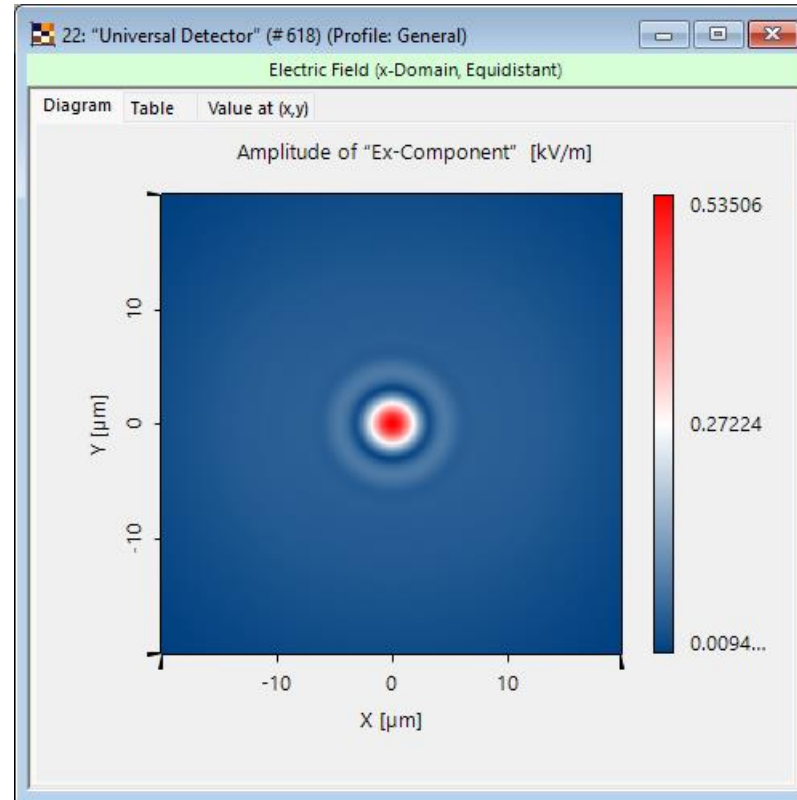
Font Size of Axis Labels	13
Font Size of Title	13

Axis Descriptions

Selection Mode: Rectangle or Ellipse

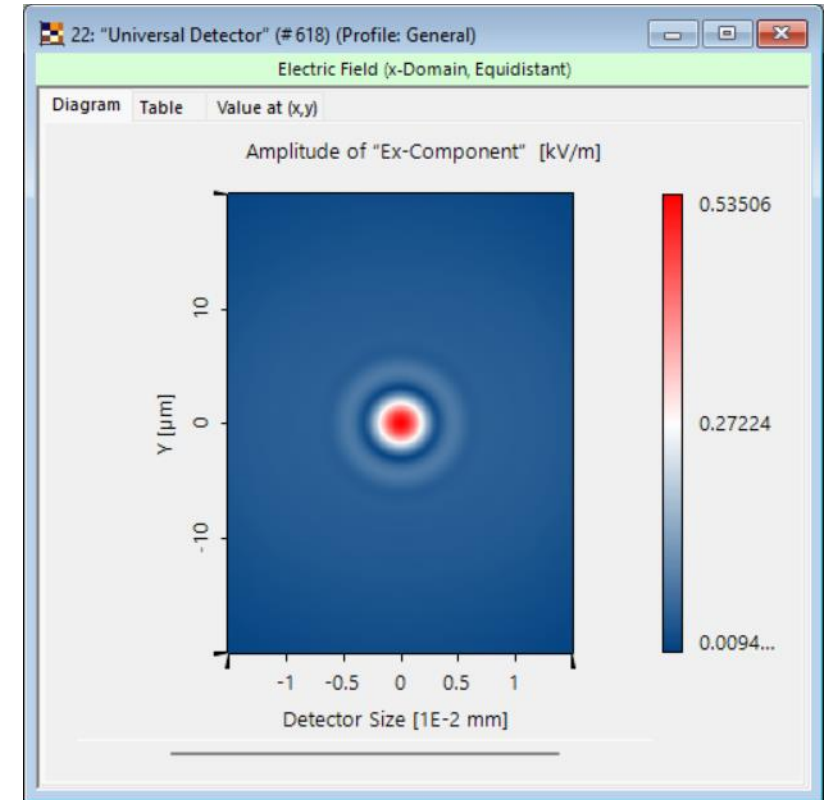
- Selection (Line)
 - Display Line Marker
- Selection (Point)
 - Display Point Marker
- Selection (Region)
 - Show Rectangle or Ellipse...
- View Mode
 - 3D Mode
- X-Axis**
 - Description: X
 - x-Axis Range: [-20.054 μm ; 19.946 μm]
 - Minimum Number of Ticks: 2
 - Format of x-Axis: Engineering
- Y-Axis**
 - Description: Y
 - y-Axis Range: [-20 μm ; 20 μm]
 - Minimum Number of Ticks: 2
 - Format of y-Axis: Engineering

Property Brow... VirtualLab Exp... Assistant Distributed Co...



X-Axis

Description	X
x-Axis Range	[-20.054 μm ; 19.946 μm] <input type="checkbox"/>
Minimum Number of Ticks	2
Format of x-Axis	Engineering

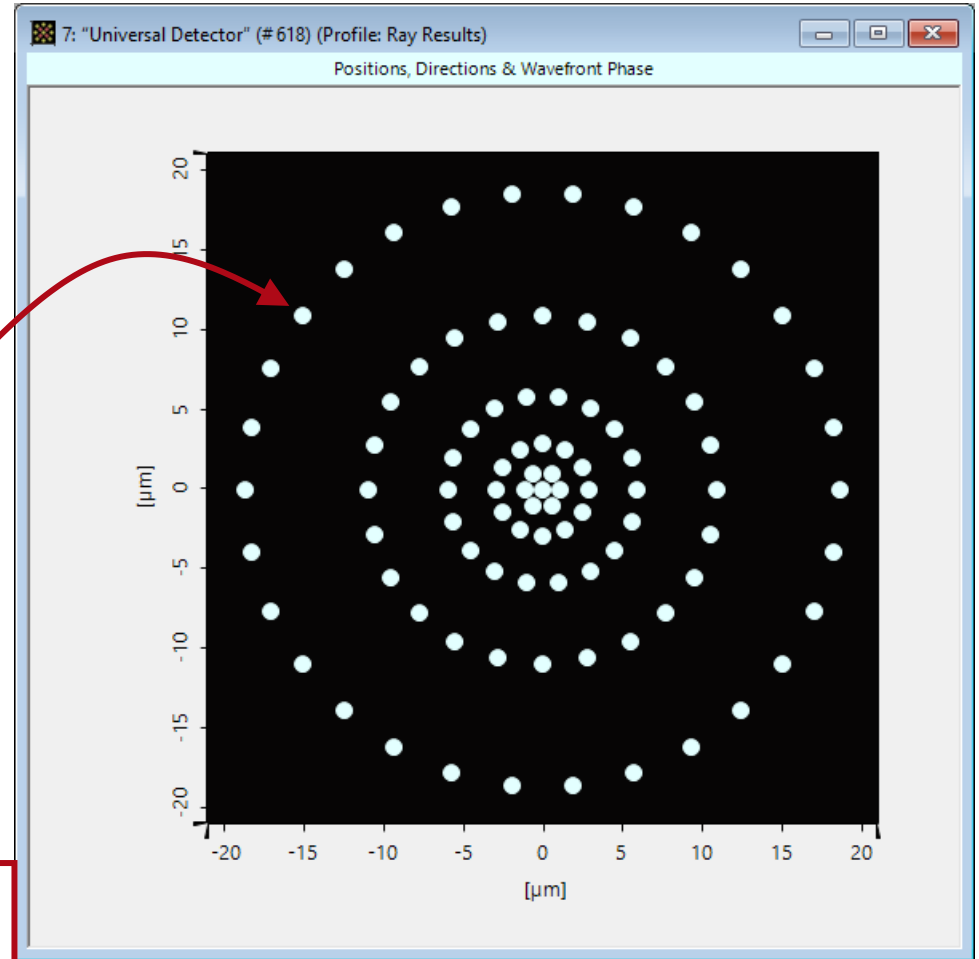
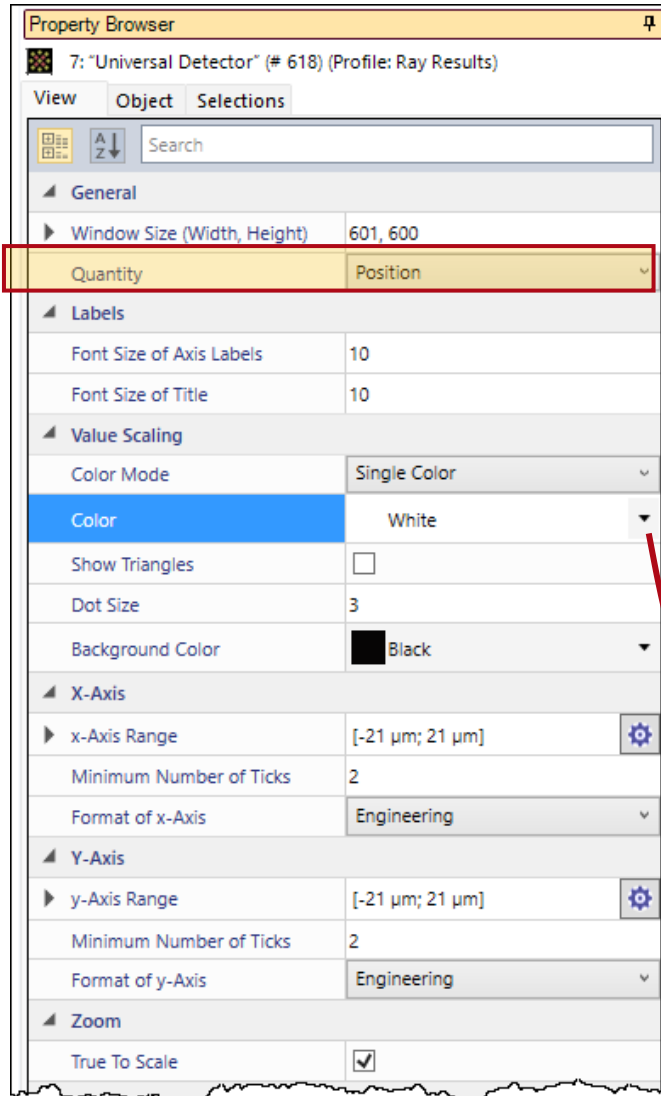


X-Axis

Description	Detector Size
x-Axis Range	[-15 μm ; 15 μm] <input type="checkbox"/>
Minimum Number of Ticks	6
Format of x-Axis	Scientific

Ray & Background Color

For *Position, Directions & Wavefront Phase* documents the color of the spots and background can be adjusted.



The color selection dialog box shows a color picker with a gradient bar. The RGB values are R: 227, G: 255, B: 255, and A: 100. The hex code is #FFE3FFFF. A red pipette icon is shown picking a color from the gradient bar.

Use the pipette to pick a specific color from elsewhere on the screen!


Object - Tab

Dimensions	
No of Data Subsets	2
Coordinate Boundaries X	[-20.054 μm ; 19.946 μm [
Coordinate Boundaries Y	[-20 μm ; 20 μm [
Coordinate Extent X	40 μm
Coordinate Extent Y	40 μm
Array Size X	39.922 μm
Array Size Y	39.922 μm
Interpretation	
Sampling	
No of Data Points	(512; 512)
Sampling Distance X	78.125 nm
Sampling Distance Y	78.125 nm
First X Coordinate	-20.014 μm
First Y Coordinate	-19.961 μm
Equidistant in X	<input checked="" type="checkbox"/>
Equidistant in Y	<input checked="" type="checkbox"/>

The *Object* tab of the *Property Browser* contains various numerical and sampling related information about the data array, including array sizes, axis units and number of sampling points.

Dialog: Edit Coordinate and Interpolation Settings

x-Axis		y-Axis	
Description	X	Description	Y
Physical Property	Length	Physical Property	Length
Interpolation Method	Nearest Neighbor	Interpolation Method	Nearest Neighbor
Dimensions		Dimensions	
Sampling Distance	78.125 nm	Sampling Distance	78.125 nm
Positioning		Positioning	
Start Coordinate	-20.014 μm	Start Coordinate	-19.961 μm
<input type="checkbox"/> Equals minimum boundary of 1st sampling interval		<input type="checkbox"/> Equals minimum boundary of 1st sampling interval	
Extrapolation Mode: Zero		Extrapolation Mode: Zero	

A click on the  button allows the user to directly change the corresponding parameter. The resulting window is the same as using the *Coordinate and Interpolation Settings* manipulation tool.



Selection - Tab

Property Browser

3: "Universal Detector" (# 618) (Profile: General)

View Object Selections

Selection (General)

Selection Mode Line

Coordinate Snapping Selection

Selection (Line)

Display Line Marker

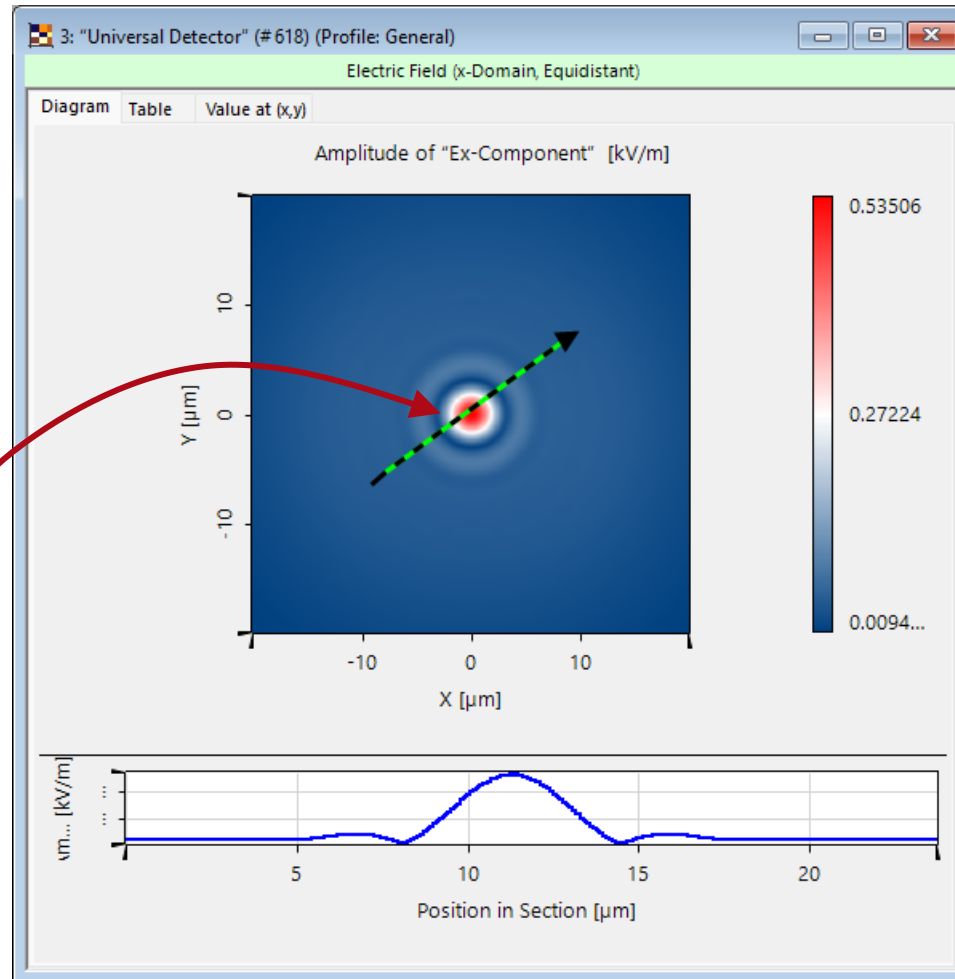
Start Coordinates	(-9.2332 μm , -6.4453 μm)
End Coordinates	(9.8293 μm , 7.6953 μm)
Length	23.735 μm
Start Indices	(138; 173)
End Indices	(382; 354)

Selection (Point)

Display Point Marker

Selection (Region)

Show Rectangle or Ellipse...



The *Object* tab of the *Property Browser* contains various numerical and sampling related information about the data array, including array sizes, axis units and number of sampling points.

Document Information

title	Property Browser
document code	SWF.0056
document version	1.0
required packages	-
software version	2024.1 (Build 1.132)
category	Feature Use Case
further reading	- Logging in VirtualLab Fusion